



NAPLEX[®] Calendar Year Report

Albany College of Pharmacy and Health Sciences School of Pharmacy

Prepared by NABP
January 22, 2026

Albany College of Pharmacy and Health Sciences School of Pharmacy Background

This report describes the North American Pharmacist Licensure Examination® (NAPLEX®) results for your graduates who graduated and subsequently tested between the 2021 to 2025 calendar years as compared to graduates from your state and from all ACPE-accredited institutions. Calendar years are defined as the date range of January 1st through December 31st of each year. Candidates are matched to your school based on their school of record for licensure. These records have been verified by NABP through transcript requirements which started in 2021; data prior to this is self-reported and not guaranteed to be correct. Please note that the values in this report are subject to change in the future as graduates within each year complete additional examinations.

The NAPLEX® Competency Statements were updated in 2025 and beginning on May 1, 2025, all NAPLEX® exams administered were constructed using the NAPLEX® Content Outline. Due to this update, the 2025 calendar year reports provide two sections on Performance Level Descriptors (PLDs). The first PLD section will provide data on the NAPLEX® Competency Areas for all students who took NAPLEX® prior to May 1, 2025. The second PLD section will provide data on the NAPLEX® Content Domains for all students who took the NAPLEX® on or after May 1, 2025. If your school did not have any 2025 graduates take the NAPLEX prior to May 1, 2025, the section on Competency Area PLDs will be omitted.

Pass Rates and Counts by Graduation Year and Examination Year

Table 1 shows the pass rates and total number of graduates by the calendar year in which they graduated and the calendar year in which they took their **first attempt** on a NAPLEX® for the past two years.

Table 1: First Attempt Pass Rates and Total Graduates in each Graduation Year by Exam Year

Graduation Year	Exam Year: 2024 % Pass (n)	Exam Year: 2025 % Pass (n)	Graduation Year Total
2024	78.3% (115)	25.0% (8)	74.8% (123)
2025	-	84.3% (121)	84.3% (121)

One-Year Pass Rates

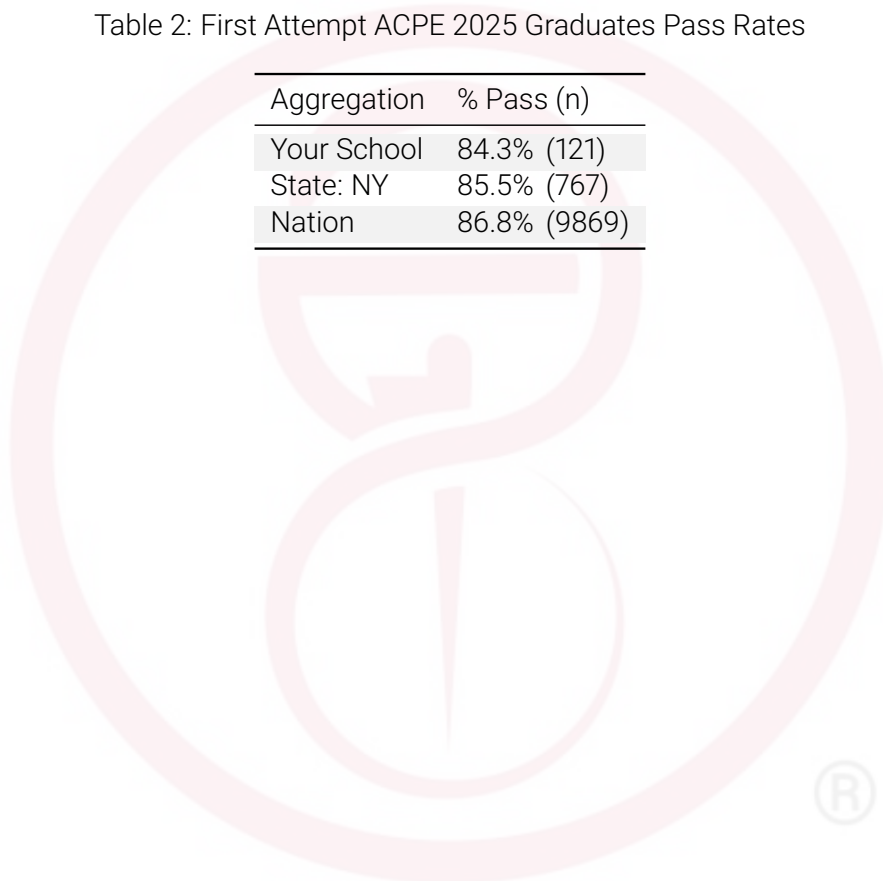
First-Time Attempts Only

2025 Calendar Year Graduates Pass Rates

Table 2 displays the **first attempt** pass rates for the 2025 calendar year graduates with the number of candidates who took an exam shown in parenthesis for your school, your state, and for the nation. Only graduates from ACPE-accredited institutions are included.

Table 2: First Attempt ACPE 2025 Graduates Pass Rates

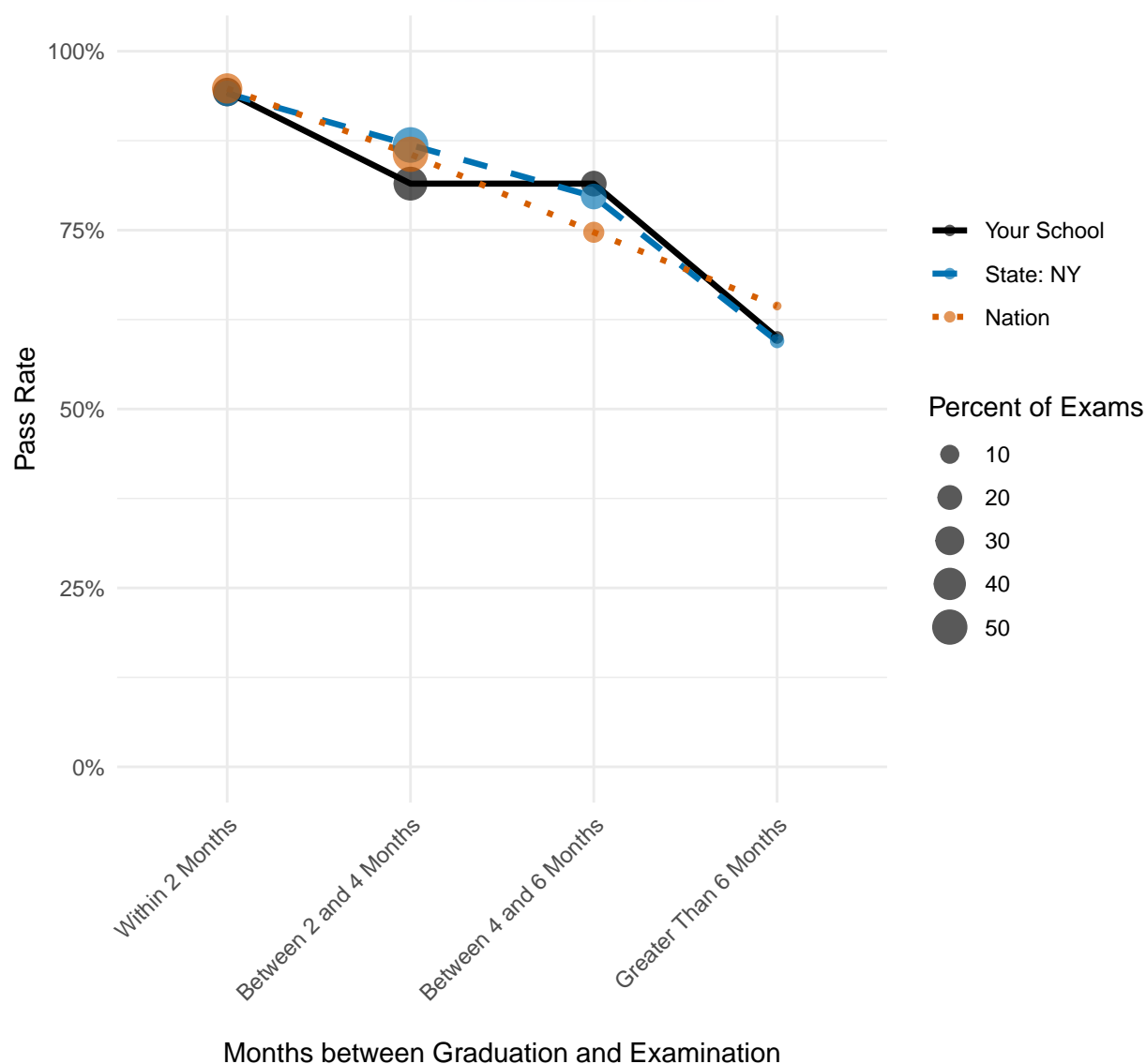
Aggregation	% Pass (n)
Your School	84.3% (121)
State: NY	85.5% (767)
Nation	86.8% (9869)



2025 Calendar Year Graduates Pass Rates by Time between Graduation and Examination

Figure 1 displays the pass rate for 2025 calendar year graduates from your school, your state, and all ACPE-accredited schools based on the number of months between graduation and examination. Only the **first attempt** on the NAPLEX® for these graduates is shown.

Figure 1: First Attempt Pass Rate of 2025 Graduates by Months between Graduation and Examination



2025 Calendar Year Graduates Pass Rates by Time between Graduation and Examination

Table 3 displays the 2025 calendar year graduates pass rates with the total number of examinations in parenthesis. Only the **first attempt** on the NAPLEX® for these graduates is shown.

Table 3: First Attempt Pass Rate of 2025 Graduates by Months between Graduation and Examination

Months To Examination	Your School % Pass (n)	State: NY % Pass (n)	Nation % Pass (n)
Within 2 Months	94.3% (35)	94.1% (170)	94.8% (3397)
Between 2 and 4 Months	81.5% (54)	86.9% (388)	85.6% (4933)
Between 4 and 6 Months	81.5% (27)	79.7% (172)	74.7% (1275)
Greater Than 6 Months	60.0% (5)	59.5% (37)	64.4% (264)

NAPLEX® Content Domain Performance Level Descriptor (PLD)

Explanation of PLDs The tables in the section provide data related to graduates' performance levels in each content domain on their **first attempt** only. There are four PLD categories which are detailed below.

- **Level 1:** Performance at this level is **far below meeting the minimum performance** necessary to demonstrate competency.
- **Level 2:** Performance at this level **does NOT meet the minimum performance** necessary to demonstrate competency.
- **Level 3:** Performance at this level **meets the minimum performance** necessary to demonstrate competency.
- **Level 4:** Performance at this level **exceeds the minimum performance** necessary to demonstrate competency.

The content domains and their descriptions are provided in [Table 4](#).

Table 4: Content Domain Descriptions

Content Domain	Description	Percent of Exam
1	Foundational Knowledge Pharmacy Practice	25%
2	Medication Use Process (Prescribing, Transcribing and Documenting, Dispensing, Administering, and Monitoring)	25%
3	Person-Centered Assessment and Treatment Planning	40%
4	Professional Practice	5%
5	Pharmacy Management Leadership	5%

2025 Graduate PLD Content Domain Percentage and Count for Your School

Table 5 displays the percentage and count of 2025 calendar year graduates from your school in each PLD category. The percentages are the percent of graduates who reached the indicated PLD within the indicated content domain. Table 5 includes content domain PLD information for only those 2025 graduates who took the NAPLEX® on or after May 1, 2025.

Table 5: Percentage and Count of School Graduates with NAPLEX® Content Domain Scores in each PLD Category

Content Domain	Performance Level Descriptor (PLD)				Total
	1 - Far Below	2 - Below	3 - Meets	4 - Exceeds	
Foundational Knowledge for Pharmacy Practice	1.7% (2)	17.4% (21)	44.6% (54)	36.4% (44)	121
Medication Use Process	2.5% (3)	19.0% (23)	36.4% (44)	42.1% (51)	121
Person-Centered Assessment and Treatment Planning	2.5% (3)	17.4% (21)	48.8% (59)	31.4% (38)	121
Professional Practice	5.0% (6)	14.9% (18)	35.5% (43)	44.6% (54)	121
Pharmacy Management and Leadership	2.5% (3)	22.3% (27)	35.5% (43)	39.7% (48)	121

Note: the percentage of candidates within the content domain who achieved that specific PLD is followed by the count of candidates within the indicated content domain who achieved that specific PLD.

2025 Graduate PLD Content Domain Percentage and Count for ACPE Graduates

Table 6 displays the percentage and count of 2025 calendar year graduates from all ACPE-accredited programs in each PLD category. The percentages are the percent of graduates who reached the indicated PLD within the indicated content domain. Table 6 includes content domain PLD information for only those 2025 graduates who took the NAPLEX® on or after May 1, 2025.

Table 6: Percentage and Count of National Graduates with NAPLEX® Content Domain Scores in each PLD Category

Content Domain	Performance Level Descriptor (PLD)				Total
	1 - Far Below	2 - Below	3 - Meets	4 - Exceeds	
Foundational Knowledge for Pharmacy Practice	2.8% (273)	16.6% (1634)	35.8% (3529)	44.9% (4428)	9864
Medication Use Process	1.6% (162)	14.8% (1457)	39.7% (3915)	43.9% (4330)	9864
Person-Centered Assessment and Treatment Planning	1.0% (99)	14.6% (1441)	44.2% (4359)	40.2% (3965)	9864
Professional Practice	3.0% (292)	15.0% (1481)	34.8% (3436)	47.2% (4655)	9864
Pharmacy Management and Leadership	5.1% (503)	15.6% (1535)	30.9% (3050)	48.4% (4776)	9864

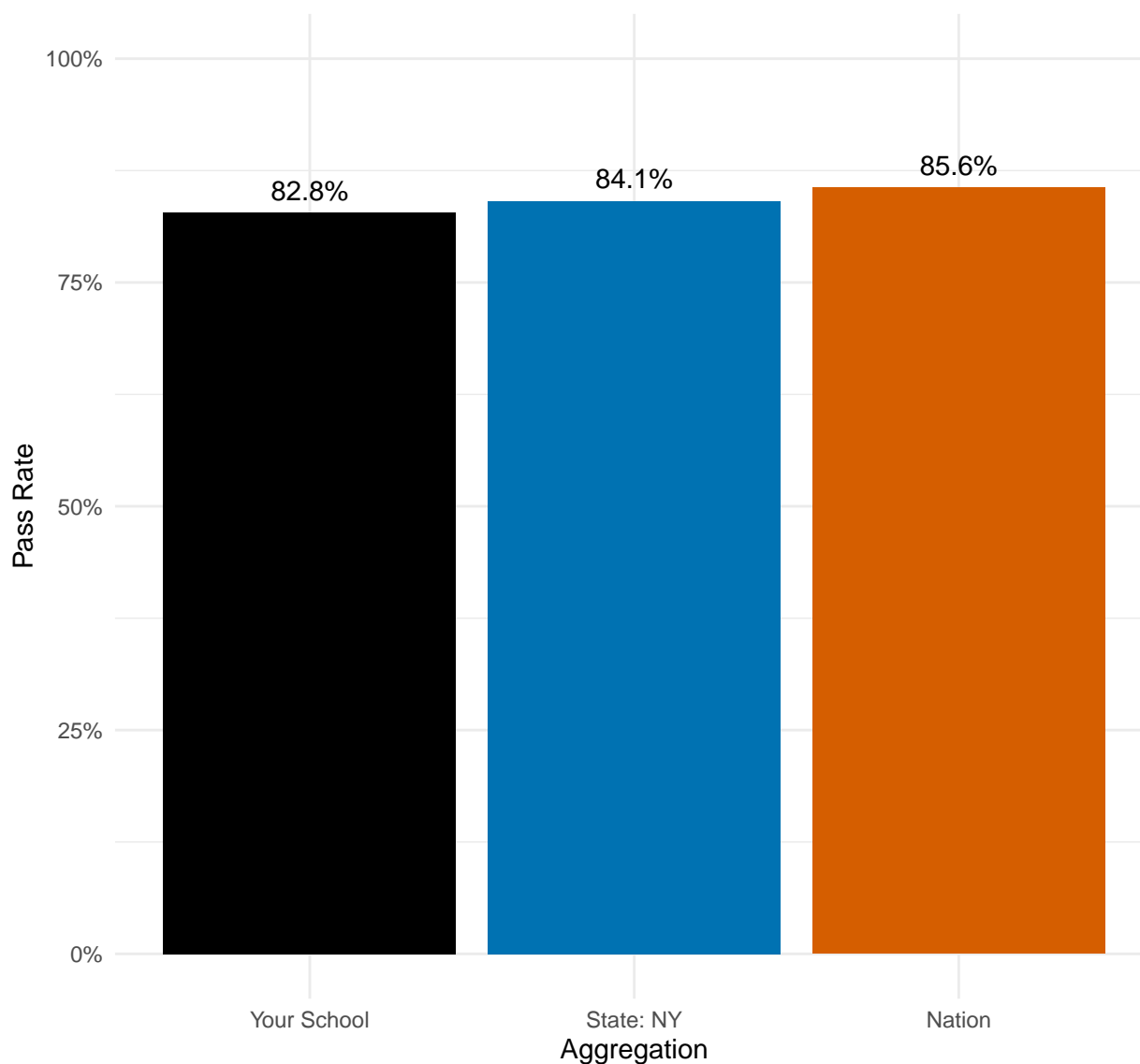
Note: the percentage of candidates within the content domain who achieved that specific PLD is followed by the count of candidates within the indicated content domain who achieved that specific PLD.

All Attempts

2025 Calendar Year Graduates Pass Rates

Figure 2 displays the pass rates on **all attempts** for the 2025 calendar year graduates for your school, your state, and for the nation. Only graduates from ACPE-accredited institutions are included.

Figure 2: All Attempt ACPE 2025 Graduates Pass Rates

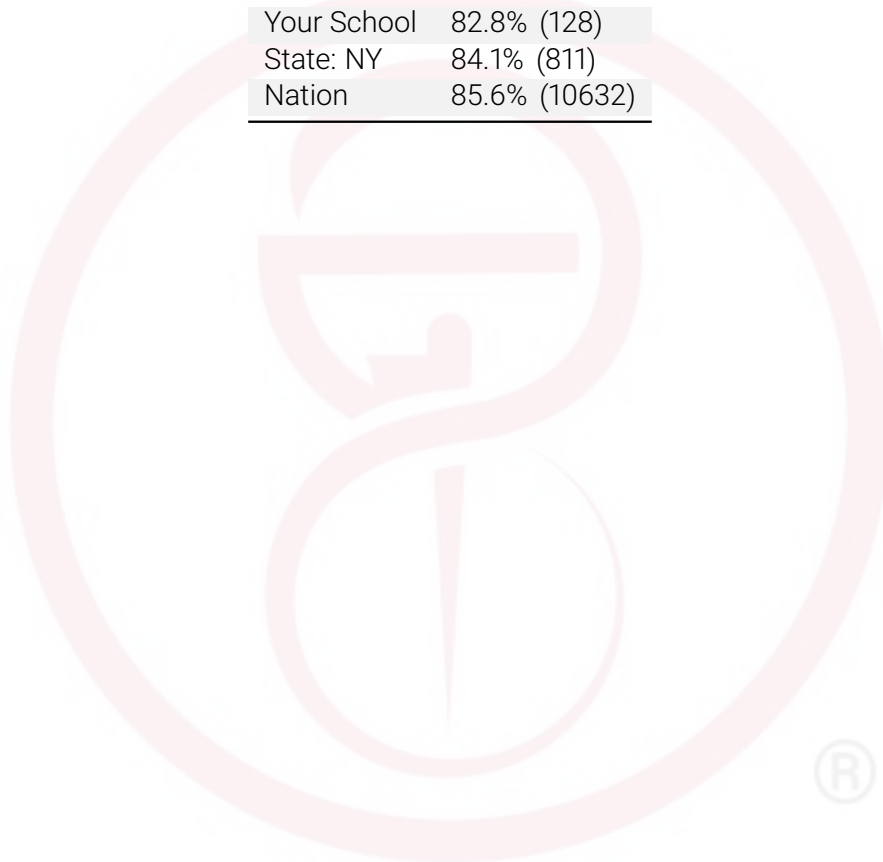


2025 Calendar Year Graduates Pass Rates

Table 7 displays the pass rates on **all attempts** for the 2025 calendar year graduates with the number of candidates who took an exam shown in parenthesis for your school, your state, and for the nation. Only graduates from ACPE-accredited institutions are included.

Table 7: All Attempts ACPE 2025 Graduates Pass Rates

Aggregation	% Pass (n)
Your School	82.8% (128)
State: NY	84.1% (811)
Nation	85.6% (10632)



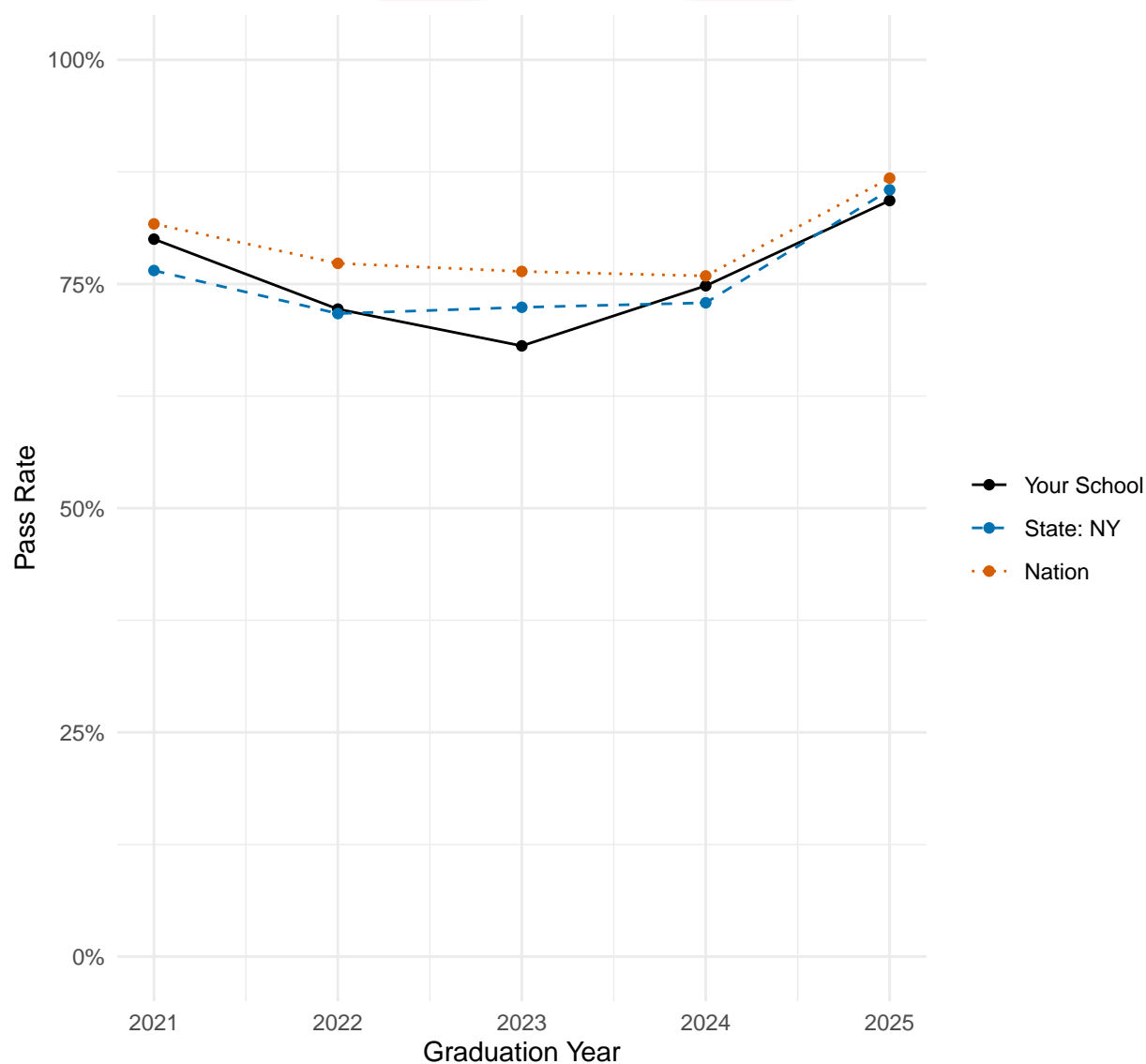
Five Year Pass Rates

First-Time Attempts Only

2021 to 2025 Pass Rates by Graduation Year

Figure 3 displays the **first attempt** pass rates for the 2021 to 2025 calendar years for your school, your state, and for the nation, where the data is available. Only graduates from ACPE-accredited institutions are included.

Figure 3: First Attempt ACPE 2021 to 2025 Graduates Pass Rates



2021 to 2025 Pass Rates by Graduation Year

Table 8 displays the **first attempt** pass rates for the 2021 to 2025 calendar years with the number of candidates who took an exam shown in parenthesis for your school, your state, and for the nation. Only graduates from ACPE-accredited institutions are included.

Table 8: First Attempt ACPE 2021 to 2025 Graduates Pass Rates

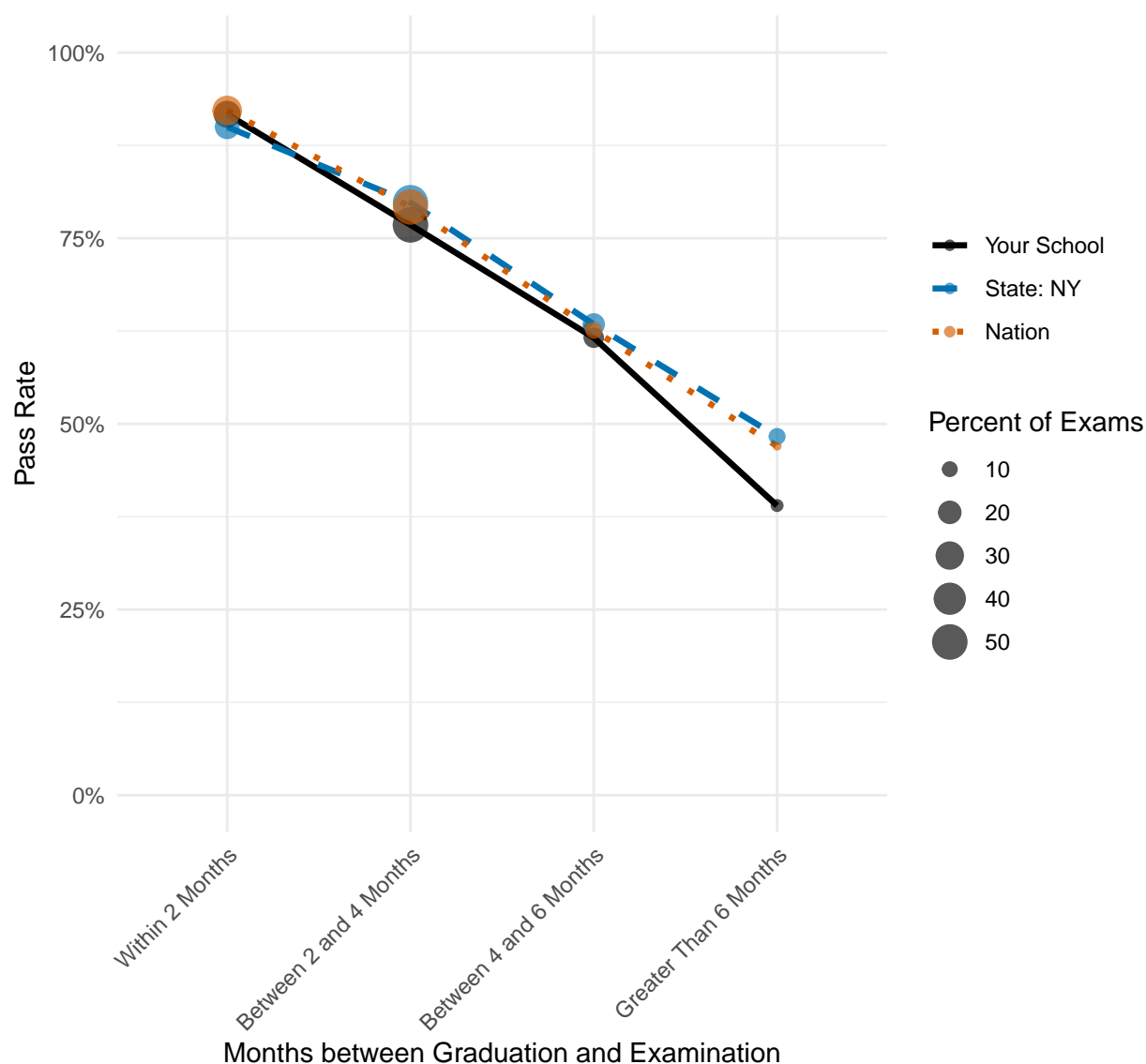
Aggregation	Graduation Year: 2021 % Pass (n)	Graduation Year: 2022 % Pass (n)	Graduation Year: 2023 % Pass (n)	Graduation Year: 2024 % Pass (n)	Graduation Year: 2025 % Pass (n)
Your School	80.0% (180)	72.2% (194)	68.1% (141)	74.8% (123)	84.3% (121)
State: NY	76.5% (912)	71.7% (820)	72.4% (843)	72.9% (808)	85.5% (767)
Nation	81.7% (14053)	77.3% (13408)	76.4% (12305)	75.9% (11136)	86.8% (9869)



2021 to 2025 Pass Rates by Time between Graduation and Examination

Figure 4 displays the pass rate for the 2021 to 2025 calendar year graduates from your school, your state, and all ACPE-accredited schools based on the number of months between graduation and examination. Only the **first attempt** on the NAPLEX® for these graduates is shown.

Figure 4: First Attempt Pass Rate of 2021 to 2025 Graduates by Months between Graduation and Examination



2021 to 2025 Pass Rates by Time between Graduation and Examination

Table 9 displays the pass rates for the 2021 to 2025 calendar year graduates with the number who passed over the total number of examinations in parenthesis. Only the **first attempt** on the NAPLEX® for these graduates is shown.

Table 9: First Attempt Pass Rate of 2021 to 2025 Graduates by Months between Graduation and Examination

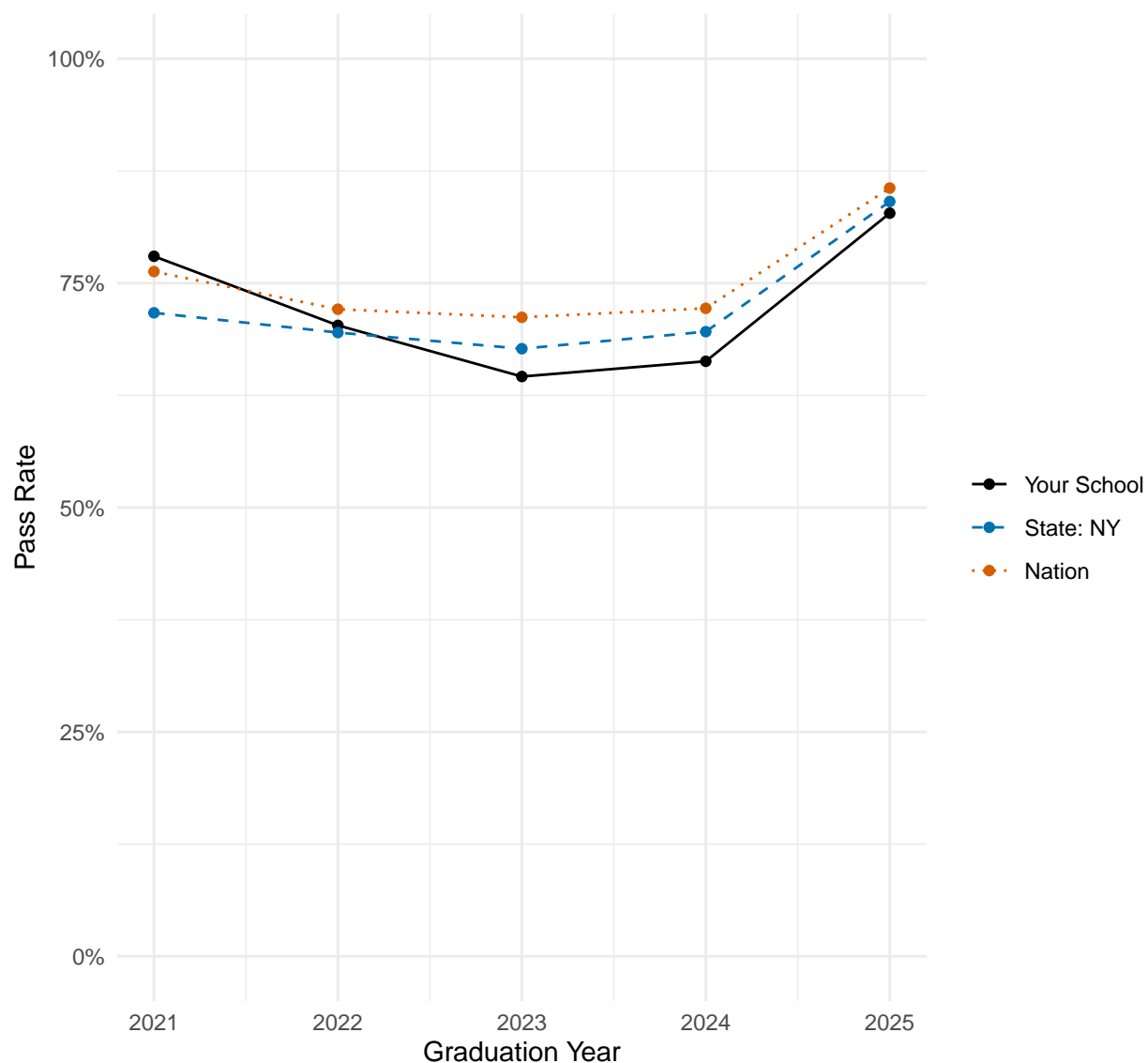
Months To Examination	Your School % Pass (n)	State: NY % Pass (n)	Nation % Pass (n)
Within 2 Months	91.7% (205)	90.0% (919)	92.2% (20232)
Between 2 and 4 Months	76.8% (383)	79.8% (2034)	79.2% (29556)
Between 4 and 6 Months	61.6% (112)	63.4% (748)	62.6% (6752)
Greater Than 6 Months	39.0% (59)	48.3% (449)	47.0% (4231)

All Attempts

2021 to 2025 Pass Rates by Graduation Year

Figure 5 displays the **all attempts** pass rates for the 2021 to 2025 calendar years for your school, your state, and for the nation. Only graduates from ACPE-accredited institutions are included.

Figure 5: All Attempt ACPE 2021 to 2025 Graduates Pass Rates



2021 to 2025 Pass Rates by Graduation Year

Table 10 displays the pass rates on **all attempts** for the 2021 to 2025 calendar years with the number of candidates who took an exam shown in parenthesis for your school, your state, and for the nation, where the data is available. Only graduates from ACPE-accredited institutions are included.

Table 10: All Attempts ACPE 2021 to 2025 Graduates Pass Rates

Aggregation	Graduation Year: 2021 % Pass (n)	Graduation Year: 2022 % Pass (n)	Graduation Year: 2023 % Pass (n)	Graduation Year: 2024 % Pass (n)	Graduation Year: 2025 % Pass (n)
Your School	78.0% (218)	70.3% (259)	64.6% (206)	66.3% (160)	82.8% (128)
State: NY	71.7% (1220)	69.5% (1117)	67.7% (1171)	69.6% (1047)	84.1% (811)
Nation	76.3% (17725)	72.1% (17653)	71.2% (16275)	72.2% (14316)	85.6% (10632)

END OF REPORT