

Registration

REGISTER AT WWW.NYSCHP.ORG

For more information and to register go to www.nyschp.org. You may link to the conference website directly from the NYSCHP home page.

The fee for this program is: \$435 until April 30, 2012. A \$50 fee will be charged after April 30, 2012.

Cancellations received 30 days prior to each program may request a 90% refund. Paid registrants who fail to attend the on site conference will receive the 5 hours home-study statement of credit or CME provided the registrant successfully scores 70% or higher on the home-study test. No refunds after April 28, 2012.

The right to cancel or change locations of the seminar due to insufficient registration is reserved by NYSCHP; registrants will be notified and receive a full refund for cancellation.

Home study information will be sent to registrants beginning April 17, 2012, including a pre-program survey. Home study exam answer sheet must be emailed to dfeinberg@nyschp.org or faxed to NYSCHP at 518-456-9319 no later than 5-15-2012.

Hotel Accommodations under the group code ASP at the Hilton Garden Inn, New Scotland Avenue, Albany, NY for Friday May 18, 2012, \$99.00/room. Reservations: 518-396-3500 or 877-782-9444.

NYSCHP
210 Washington Ave Extension, Albany, NY
12203 Phone: (518) 456-8819 E-mail:
dfeinberg@nyschp.org



nyschp

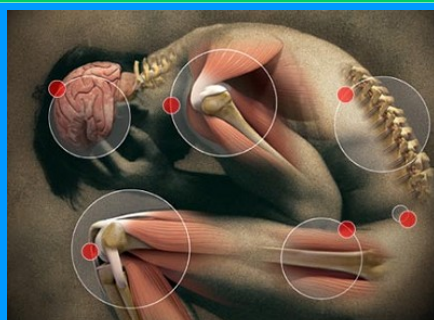
New York State Council of Health-system Pharmacists

Copromoted by

Albany College of Pharmacy and Health Sciences

Pain Management Practice Based Program

(16 credits)



LOCATION

Albany College of Pharmacy and Health Sciences

106 New Scotland Avenue, Room 202
Student Center, Albany, NY 12203

May 18, 2012

May 19, 2012

12:30—5:30 PM

8:00 AM—2:30 PM

Sponsors

NYSCHP would like to thank the following sponsors for their support of this program.

GNYHA Services Inc.,

Goals of The Program

The home study training will address an overview of evidence-based pain management programs; optimizing chronic pain management; palliative care for the terminally ill drug addict; interface between pain and drug abuse and the evolution of strategies to optimize pain management while minimizing drug abuse; fibromyalgia therapy; chronic nonmalignant pain in primary care; pain management in the hospitalized patient and peripheral neuropathy. Participants will have four (4) weeks to complete the required readings and open book post-test. The home study portion must be completed in order to participate in the live program. The participant must score at least 70% on an open book self-assessment. Pharmacists will receive a total of 5 contact hours or 0.5 CEUs.

The live program consists of 11 hours (1.1 CEUs) of both lecture and hands-on training in a workshop setting with use of an audience response system. Participants will review and discuss pain overview with an understanding of pain types, syndromes, distinction between chronic and acute pain, the pathophysiology of pain (nociceptive, neuropathic), general overview of electro diagnostic tools, utilization of imaging reports, recognition of lack of clear connection between imaging and symptomatology, general overview of treatment options to be considered (non-invasive, interventional, medication management), therapeutics of opioid; geriatric considerations and neurology. The program will conclude with Pain Management Jeopardy utilizing an audience response system. At the conclusion of the live program, an open-book final exam must be completed. A score of at least 70% is required. Pharmacists will receive a total of 11 hours or 1.1 CEUs for completion of this part.

Upon successful completion of all components of the program, attendee will receive a certificate of achievement.

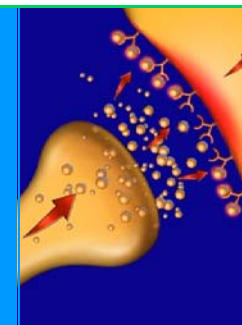
Faculty Speakers:

Jeffrey Fudin, BS, PharmD
Diplomate, American Academy of Pain Management
CEO, NovaPain (Located at www.PainDr.com), Clinical Pharmacy Specialist, Pain Management, VAMC, Albany, NY
Adjunct Associate Professor of Pharmacy Practice, Albany College of Pharmacy & Health Sciences, Albany, NY

James Otis, MD, FAAN, FAAPM
Director Pain Management, & Clinical Services Director, Neurology Consultation Service, Boston Medical Center, Boston, MA
Associate Professor Neurology, Boston University School of Medicine, Boston, MA

Steven D. Passik, PhD
Professor of Psychiatry & Anesthesiology, Vanderbilt University, Nashville, TN

Steve Levy, BS, PharmD, BCPS, CGP
Clinical Pharmacy Specialist Internal Medicine & Geriatrics, Kingsbrook Jewish Medical Center, Brooklyn, NY



Course Outline



PART 1 – HOME STUDY TRAINING (5 HOURS HOME-STUDY: 0.5 CEUs) #0134-0000-12-015-H01-P

Learning Objectives:

- Differentiate among addiction, pseudoaddiction, physical dependence, and tolerance in the terminally ill patient.
- Describe important considerations in the differential diagnosis for a terminally ill patient with a previous or current history of addiction.
- Develop a treatment plan for an addicted terminally ill patient.
- Describe the role of a pharmacist in the management of a patient's chronic pain.
- Discuss the pros and cons as they relate to the understatement of chronic pain by health care providers and patients.
- Define "rational polypharmacy" and the relevance of pharmacokinetics/pharmacodynamics to "rational polypharmacy".
- List the medications available for the treatment of chronic pain.
- Identify the impact of pharmacokinetic/pharmacodynamics on formulary substitution.
- Describe the role of a Hospitalist in the pain management of a hospitalized patient.
- Compare and contrast the role of new parenteral therapies in the surgical setting, including IV acetaminophen and ibuprofen.
- Develop a treatment plan for treating pain in the elderly.
- List the pharmacologic and nonpharmacologic therapies available to treat pain in the hospitalized patient.
- Differentiate the approach to pain management comparing the elderly to a younger people.

- Compare and contrast the medications recommended for treatment of older adults with persistent pain.
- List the risks and benefits of long term use of opioid therapy for pain management in the elderly.
- Describe the FDA REMS initiative and tools for the reduction of addiction risk for rapid onset and long-acting opioids mandated by the FDA.
- Recognize and identify the risk factors for addiction, abuse and misuse in variable populations for teens to the elderly and discuss the REMS in these populations.
- Describe the impact of REMS on pharmacy practice.

PART 2 – LIVE PROGRAM TRAINING (11 Hours 1.1 CEUs)#0134-0000-12-016-L01-P

Learning Objectives:

- Define the physiologic changes in the elderly that increase the risk of morbidity and mortality.
- Identify strategies to maximize safe medication use in the elderly.
- Learn the classification of the main pain types.
- Discuss the diagnostic modalities for back and neck pain and neuropathic pain, their indications and limitations.
- Review the physiology of neuropathic pain.
- Differentiate between chronic and acute pain.
- Compare and contrast various pharmacological and chemical classes of opioids.
- State the prevalence and trends in prescription drug abuse.
- Design a treatment strategy commensurate with assessed risk.
- Discuss how pain management, both acute (e.g. post-op) and chronic/progressive varies in the in-patient and/or ICU setting versus the outpatient setting.
- Differentiate between physical dependence and tolerance and how these terms apply in the treatment of acute and chronic pain and for a terminally ill patients.
- Discuss drug-drug and drug-disease state interactions that should be considered in picking acute and chronic pain regimens.

AGENDA*

May 18, 2012

12:00—12:30 PM	Registration
12:30—12:45 PM	Introductions & Overview
12:45—1:45 PM	Opioids: Clinical Aspects
1:45— 3:00 PM	Opioids: Part I
3:00—3:15 PM	Break
3:15—4:15 PM	Opioids Part II
4:15—5:15 PM	REMS
5:15—6:30PM	Geriatrics: Part I
6:30 PM	Announcements

May 19, 2012

8:00—9:00 AM	Geriatric: Part II
9:00—10:00 AM	Pain Pathophysiology
10:00—10:15 AM	Break
10:15—11:15 AM	Neurology
11:15—12:30	Workshop
12:30—2:00 PM	EXAM Boxed Lunch
2:00 PM	Program Conclusion

* Program subject to change

Pain Management Practice Based Certificate Program:

In order to receive your certificate of achievement you must successfully complete both parts of the pain management program. The steps need to be completed in succession as you will be unable to participate in the live program without first completing the home study program. Formal certificates will be mailed upon successful completion of the program in its entirety.

Continuing Education Credit

The New York State Council of Health-system Pharmacists is accredited by the Accreditation Council for Pharmacy Education as a provider of continuing pharmacy education



Pharmacists will receive a total of 16 hours of continuing education credit (1.60 CEUs) upon completion of this seminar.

DIDACTIC HOME-STUDY COMPONENT: ACPE #0134-000-12-015-H01-P (5 hrs.or 0.5 CEUs)

LIVE PROGRAM COMPONENT: ACPE #0134-000-12-016-L01-P (11 hrs. or 1.1 CEUs)

Certificate of completion: ACPE # 0134-0008

Grievance Policy : All grievances regarding courses, personnel or practices at any continuing pharmacy education program should be brought to the attention of the Program Administrator/Executive Director. Every attempt will be made to satisfy the complainant. In addition, measures shall be taken to correct deficiencies. Those program participants who wish to appeal their participation at a program should address such an appeal in writing to the Program Administrator/Executive Director, Arizona Pharmacy Alliance within 10 working days of the program. The Program Administrator will convene an appeal process committee consisting of the members of the CE Committee within 30 days after the filing of the appeal. The written results of the appeal will be shared with the participant within two weeks following the committee meeting.